



SPP/SPPS Series

Speakers & LED Speaker/Strobes



Compact Energy Efficient Audible/Visual Solution

MGC's Speakers and Speaker/Strobes extend the notification appliance offering to provide a complete family lineup which utilizes advanced LED technology.

Designed for indoor/outdoor wall or ceiling mount applications, MGC's Speakers and Speaker/Strobes are offered in 25/70V, 1/4, 1/2, 1 or 2 W, high candela and red/white options for flexibility.

MGC also offers a trim plate/adaptor kit for applications where ceiling back box space is limited. External sync module for compatibility with any UL FACU or PSU.

MGC's Speaker and Speaker/Strobes comply with agency requirements including the NFPA 72, UL 1971, UL 1638, UL 1480, ULC S526 and ULC S541.

- Energy Efficient
- Flexible
- Safe
- Easy to install



Ceiling Mount Speakers



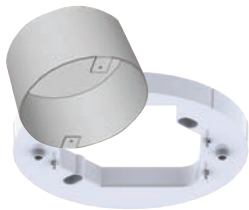
Ceiling Mount Speakers/Strobes



Wall Mount Speakers



Wall Mount Speaker/Strobes



Ceiling Mount Accessories



Weather Protected Wall/Ceiling Mount Speaker



Weather Protected Wall Mount Speaker/Strobe

FEATURES

All models with 25V/70V options

- All models with RED or WHITE options
- Speaker Power Setting: ¼, ½, 1, 2 W
- Built-in Synchronization Candela Settings for Speaker/Strobes
- Wall Mount models: 15, 30, 75, 110, 185, 15/75 cd
- Ceiling Mount models: 15, 30, 75, 110, 125, 15/75 cd
- Ceiling Mount High Candela models: 50, 75, 90, 130, 185, 15/75 cd
- Weather Protected Devices Temperature ranges from -40°C to 66°C (-40°F to 151°F)

ENERGY EFFICIENT

Advanced LED technology provides ultra low current draw performance

- Allows for a higher capacity of notification devices per circuit
- Eases external power supply requirements

FLEXIBLE

- Multiple language plastic inserts included with speaker/strobes (English/French/Spanish)
- Alert plastic inserts included with White Speaker/Strobes.

SAFE

- Device settings are located on the back of the unit to prevent tampering
- Compliance
 - UL 1480, UL 1971 and UL 1638
 - ULC-S541 and ULC-S526
 - NFPA 72 (Meets 20 millisecond pulse width requirement)

EASY TO INSTALL

- Wall models can be mounted directly onto a 4" square back box.
- Ceiling model can be mounted on a 6" round flush back box (IB-104)
- Optional spacer (SPKC-W) for mounting on a 4" square electrical box

Ceiling Mount Speakers

SPP-104-25	White
SPP-104-70	White
SPP-104-25R	Red
SPP-104-70R	Red

Ceiling Mount Speakers/Strobes

SPPS-104-25	White
SPPS-104-70	White
SPPS-104-25R	Red
SPPS-104-70R	Red
SPPS-104-25H	High candela, White
SPPS-104-70H	High candela, White
SPPS-104-25HR	High candela, Red
SPPS-104-70HR	High candela, Red

Wall Mount Speakers

SPP-204-25	White
SPP-204-70	White
SPP-204-25R	Red
SPP-204-70R	Red

Wall Mount Speaker/Strobes

SPPS-204-25	White
SPPS-204-70	White
SPPS-204-25R	Red
SPPS-204-70R	Red
SPPS-204-25R-WP	Weather Protected, Red
SPPS-204-70R-WP	Weather Protected, Red
SPPS-204-25-WP	Weather Protected, White
SPPS-204-70-WP	Weather Protected, White

Weather Protected Wall/Ceiling Mount Speakers

SPP-204-25R-WP	Red
SPP-204-70R-WP	Red
SPP-204-25-WP	White
SPP-204-70-WP	White

Accessories

IB-104	6" Back Box
SPKC-W	Spacer/trim ring
MIX-4050	MGC SYNC module
MRI-4050	Secutron SYNC module

This document is provided by Mircom Technologies Ltd., MGC Systems Corp., or their affiliates, subsidiaries and brands, for convenience or marketing only and does not describe products or services technically. For technical information refer to technical manuals. We do not make representations or warranties regarding this information, including as to completeness or accuracy. We may change these contents at any time and reserve all rights in the contents, including copyrights, trademarks and other intellectual property.

For more information visit
Mircom.com