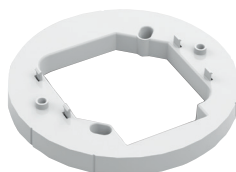




**SPEAKERS**  
SPP-104-25 (white)  
SPP-104-70 (white)  
SPP-104-25R (red)  
SPP-104-70R (red)

## SPEAKER STROBES

SPPS-104-25 (White)  
SPPS-104-70 (White)  
SPPS-104-70R (Red)  
SPPS-104-25R (Red)  
SPPS-104-25H (High candela White)  
SPPS-104-70H (High candela White)  
SPPS-104-25HR (High candela Red)  
SPPS-104-70HR (High candela Red)



SPKC-W  
(Optional White Spacer)

## Description

The ceiling speaker SPP-104 and speaker strobe SPPS-104 Series offer an audible/visual solution that delivers exceptional energy efficiency in a compact design.

Utilizing advanced LED technology, SPPS-104 Series provides a much lower current draw than xenon bulb technology. This in turn allows for more devices on a notification appliance circuit while reducing the number of external power supplies required.

When flash synchronization is required, the built-in synchronization on the control unit can be used or can be done through a synchronization module.

The SPPS-104 speaker strobes and the SPP-104 speakers are designed to meet NFPA 72, UL1480, UL1638, UL 1971, ULC S541, ULC S526 requirements for visual and audible notification appliance.

## Features

- Advanced LED technology provides superior current draw performance across the entire range of candela settings
- 25Vrms or 70.7Vrms Speaker only or Speaker Strobe options
- Speaker power settings: ¼, ½, 1, 2 W
- Field selectable candela settings for SPPS-104-25/70 models: 15, 30, 75, 110, 125, 15/75 cd
- High candela option for flexibility
- Field selectable candela settings for SPPS-104-25/70H (high candela) models: 50, 75, 90, 130, 185, 15/75 cd
- Synchronize via option module or by panel with MGC protocol
- Spacer (SPKC-W) option for mounting to 4 inch square by 2 1/8" electrical box.
- Tamper proof option settings
- Red or white option
- Enhance emergency communication with white models featuring an 'ALERT' insert

## Benefits

**Energy Efficient:** Ultra low current draw (33mA at 15cd). Allows for a higher capacity of notification devices per circuit and eases external power supply requirements.

**Flexibility:** Multiple language plastic inserts included with speaker strobes (English/French/Spanish)

**Simple:** Trim plate/adaptor kit brackets (SPKC-W) for standard 4" back box use in retrofit applications

## Specifications

Operating temperature	0°C to 50° (32°F to 122°F)
Humidity range	0% to 93%
Strobe flash rate	1 Hz (1 flash per sec.)
Nominal strobe voltage	Regulated 24VDC/VFWR
Operating voltage range	16-33 VDC/VFWR
Nominal speaker voltage	25V or 70.7Vrms
Speaker Size	3.31" deep (max), 7" diameter
Power Setting	¼, ½, 1, 2 W
Speaker Frequency Range	400-4000 Hz
Terminal wire gauge	12-22 AWG
Optional spacer	SPKC-W



## Audible Ratings

SOUND PRESSURE LEVEL OUTPUT

SPP-104 SERIES				
WATT Tap	UL Reverberant (dBA@10ft)		UL Anechoic (dBA@3m)	
	70	25	70	25
2	89.2	89.2	89.6	89.4
1	86.5	87.4	86.8	86.8
1/2	83.7	84.5	83.9	83.7
1/4	80.5	81.2	80.7	80.5
SPPS-104 SERIES				
WATT Tap	UL Reverberant (dBA@10ft)		UL Anechoic (dBA@3m)	
	70	25	70	25
2	89.0	89.0	87.8	88.2
1	86.7	86.8	85.1	85.6
1/2	84.0	83.9	82.3	82.6
1/4	80.8	80.7	78.9	79.5

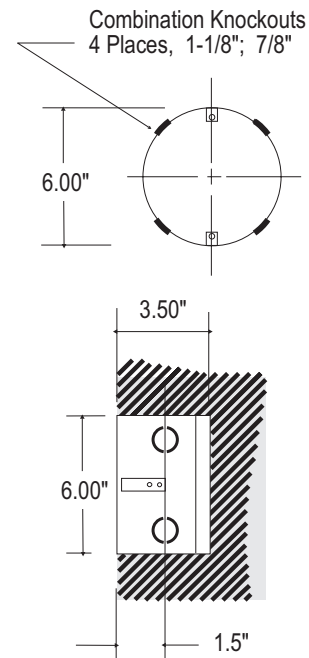
## Strobe Ratings

STROBE OPERATION RMS CURRENTS (mA)

SPPS-104 SERIES		
Candela	Regulated 24VDC	Regulated 24VFWR
15	33	33
30	47	43
75	111	100
110	204	186
125	295	277
15/75	112	100
SPPS-104 H SERIES		
Candela	Regulated 24VDC	Regulated 24VFWR
50	54	57
75	78	83
90	100	104
130	159	162
185	343	327
15/75	82	87

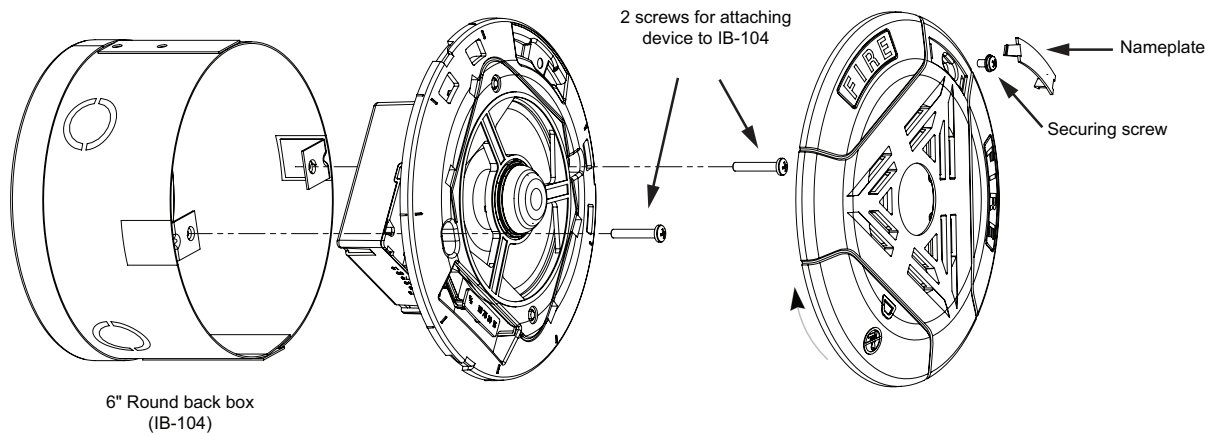
## Mounting

**IB-104** FLUSH MOUNTING BACKBOX

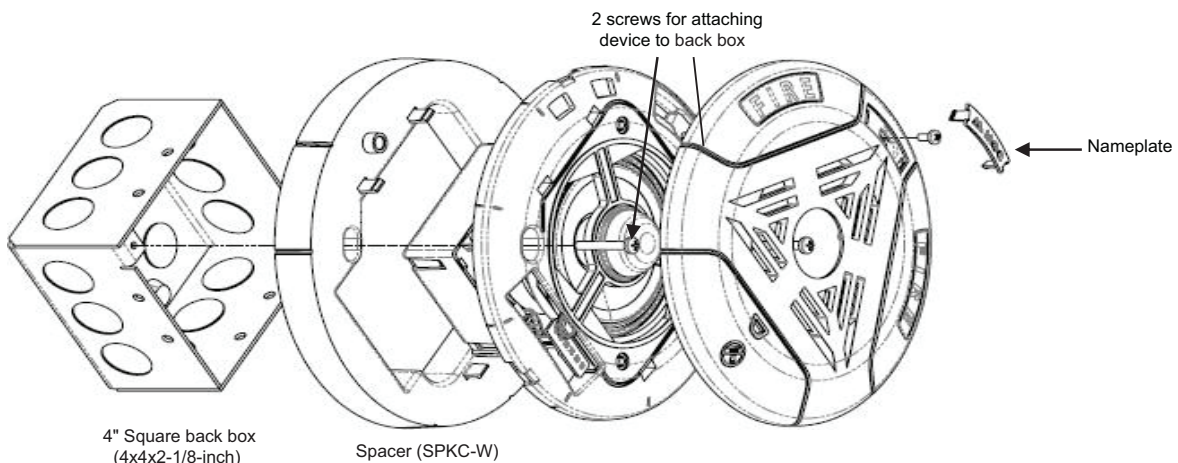


## Mounting

**Ceiling Speaker Strobe mounting with 6" back box (IB-104)**

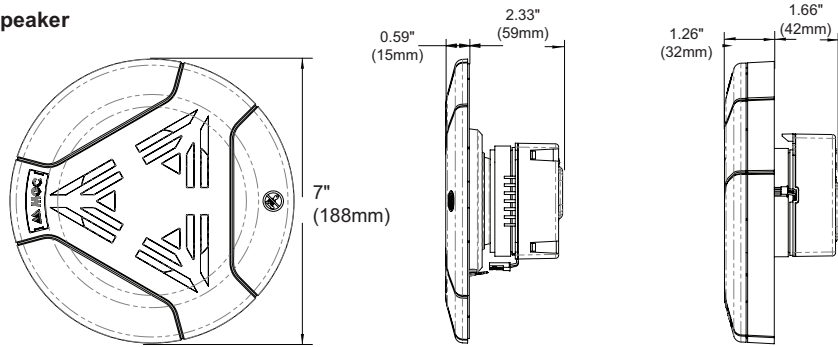


**Mounting with optional spacer (SPKC-W) if using a standard 4" square electrical back box**



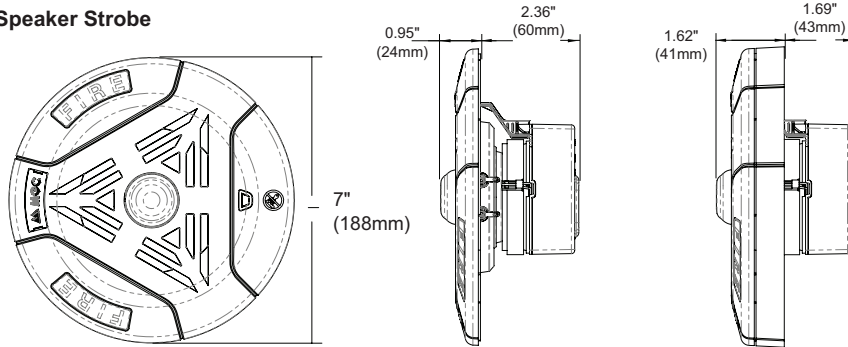
## Dimensions

**Ceiling Speaker**



Dimension with spacer installed

**Ceiling Speaker Strobe**



Dimension with spacer installed

## Ordering Information

Model	Description
SPP-104-25	Ceiling mounted speaker 25V White
SPP-104-70	Ceiling mounted speaker 70V White
SPP-104-25R	Ceiling mounted speaker 25V Red
SPP-104-70R	Ceiling mounted speaker 70V Red
SPPS-104-25	Ceiling mounted speaker strobe 25V White
SPPS-104-70	Ceiling mounted speaker strobe 70V White
SPPS-104-25R	Ceiling mounted speaker strobe 25V Red
SPPS-104-70R	Ceiling mounted speaker strobe 70V Red
SPPS-104-25H	Ceiling mounted speaker strobe 25V with High Candela White
SPPS-104-70H	Ceiling mounted speaker strobe 70V with High candela White
SPPS-104-25HR	Ceiling mounted speaker strobe 25V with High Candela Red
SPPS-104-70HR	Ceiling mounted speaker strobe 70V with High Candela Red
SPKC-W	Optional White Spacer for Retrofit or for mounting in a standard 4" square box
IB-104	6 Inch round flush back box
MIX-4050	MGC Sync Module
MRI-4050	Secutron Sync Module



### Canada

25 Interchange Way Vaughan, ON L4K 5W3  
Telephone: (905) 660-4655 | Fax: (905) 660-4113

### U.S.A.

4575 Witmer Industrial Estates Niagara Falls, NY 14305  
Toll Free: (888) 660-4655 | Fax Toll Free: (888) 660-4113