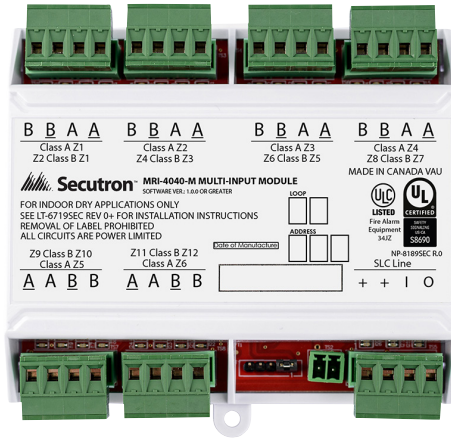


**MRI-4040-M  
MULTI INPUT MODULE (6 CLASS A / 12 CLASS B)**



**Description**

The MRI-4040-M Multi Input Module is an intelligent addressable device that can be used for alarm, monitor or supervisory type applications. It is designed to be used with Secutron compatible Fire Alarm Control Unit. The MRI-4040-M provides six (6) class A or twelve (12) class B inputs. If the module is configured as class A, it provides an internal EOL and when it is configured as class B, the module can monitor 12 inputs with only one address.

The address of the MRI-4040-M is set by using the hand-held programmer tool MIX-4090. The module has LED indicators for each input to signal alarm (RED) or trouble (YELLOW). A green LED shows SLC communication status and finally, two yellow LEDs indicate if a short circuit has been isolated on either side of the SLC connection.

The MRI-4040-M provides a fast and quick installation as it comes with plug-in terminal blocks and it can be easily mounted on the DIN rail without using any additional tool.

The MRI-4040-M can be mounted on either the MMX-BB-4002R which supports up to 2 multi-modules or on the MMX-BB-4006R which allows up to 6 multi-modules. The MRI-4040-M can also be mounted on any UL/ULC listed backbox enclosure by using the mounting bracket kit.

**Features**

- Supports either 6 class A or 12 class B inputs.
- No EOL resistor required when input is in Class A operation
- Monitor 12 independent input circuits with only one address when configured as class B
- Fast, reliable contact monitoring
- Affordable and space efficient
- Mounting clip for DIN rail and plug-In terminal blocks for fast and easy installation
- Each input has LED indicators to signal Alarm (RED) or Trouble (YELLOW)
- Additional LEDs to show SLC communication status and if a short circuit has occurred
- Compatible with MR-400, MR-401 and MMX-4000 Fire alarm control panels
- Up to 2 modules can be mounted on UL/ULC listed backbox enclosure, MMX-BB-4002R
- Up to 6 modules can be mounted on UL/UL listed backbox enclosure, MMX-BB-4006R
- Mounting bracket kit allows to mount it on any other UL/ULC listed equivalent backbox enclosure

**Technical Specifications**

Normal Operating Voltage	15 to 30 VDC
Alarm Current	8.3 mA
Standby Current:	4.0 mA max.
EOL Resistance	22 kΩ
Max Input Wiring Resistance	150 Ω total
Operating Temperature Range	32°F to 120°F (0°C to 49°C)
Humidity Range	10% to 93% non-condensing
Dimensions	110 mm x 93 mm (4 5/16 x 3 11/16 in)
Wiring range on all terminals	12-22 AWG

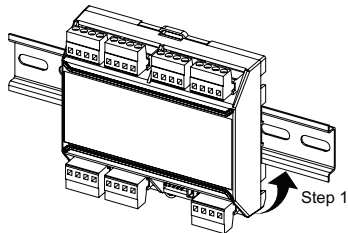


## Mounting Instructions

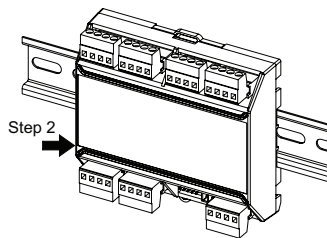
The MRI-4040-M can be mounted on a top-hat style 35mm wide DIN rail included in the MGC listed enclosure or any equivalent Listed enclosure (see document LT-6749) by using the MGC-4000-BR (Mounting bracket kit).

- MMX-BB-4002R for 1 or 2 modules (see document LT-6736SEC)
- MMX-BB-4006R for up to 6 modules (see document LT-6736SEC)

1. Hook the multi module device onto the bottom of the DIN rail with three teeth.

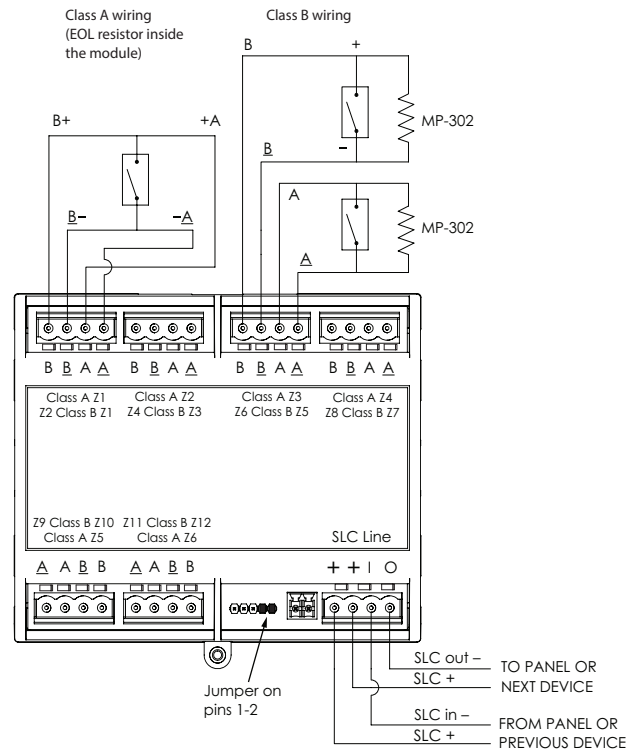


2. Push the multi module device onto the DIN rail and release the clip.



## Wiring Diagram

Before installing this device, seek guidance from the compatible control panel instructions for the device's operation modes and the configuration requirements. It is recommended to disconnect the SLC line before performing installation or service.



## Ordering Information

Model	Description
MRI-4040-M	4000 Series Multi Input Module (6 class A / 12 class B)
MMX-BB-4002R	Box for 2 MRI-4000 Multi modules, red door
MMX-BB-4006R	Box for 6 MRI-4000 Multi modules, red door
MGC-4000-BR	Mounting Bracket Kit for Multi modules
MIX-4090	4000 Series Address Programmer
MP-302	EOL 22kΩ resistor on Mounting Plate